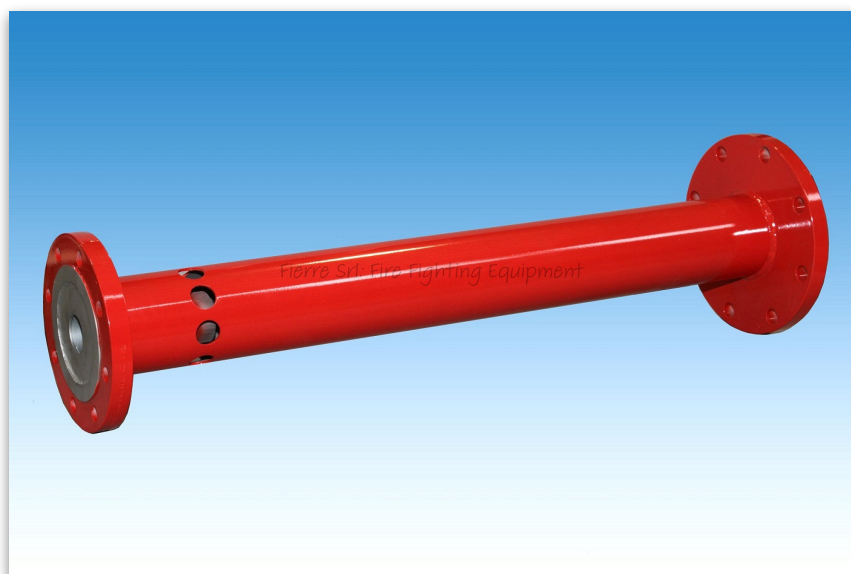


## LANCIA SCHIUMA Mod. FI - LSBE FOAM BRANCHPIPE Mod FI - LSBE



### CARATTERISTICHE:

- Corpo: Acciaio al carbonio o acciaio inox
- Attacco: Flangiato UNI, ANSI
- Ugello: acciaio inox

### A Richiesta

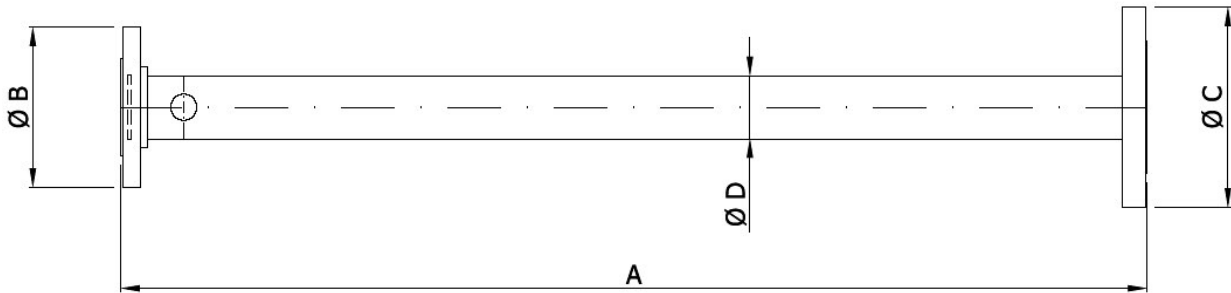
- Rete di protezione in acciaio inox

### CHARACTERISTICS:

- Body: Carbon steel or st. steel
- Connection: Flanged UNI, ANSI
- Nozzle: stainless steel

### On Request

- Protective mesh in st. steel



MODELLO TYPE	A	ø B	ø C	øD	PORTATA LTS/1' 5 BAR DELIVERY LTS/1' 5 BAR	PESO WEIGHT Carbon Steel (Kg.)	PESO WEIGHT S.Steel (Kg.)
FI-LSBE 2	580	2"	3"	3"	200	10	8,5
FI-LSBE 4					400	10	8,5
FI-LSBE 6		3"	4"	3"	600	18	15
FI-LSBE 8					800	18	15
FI-LSBE 10	1000	4"	6"	4"	1000	22	16
FI-LSBE 12					1200	34	24
FI-LSBE 20					2000	34	24